



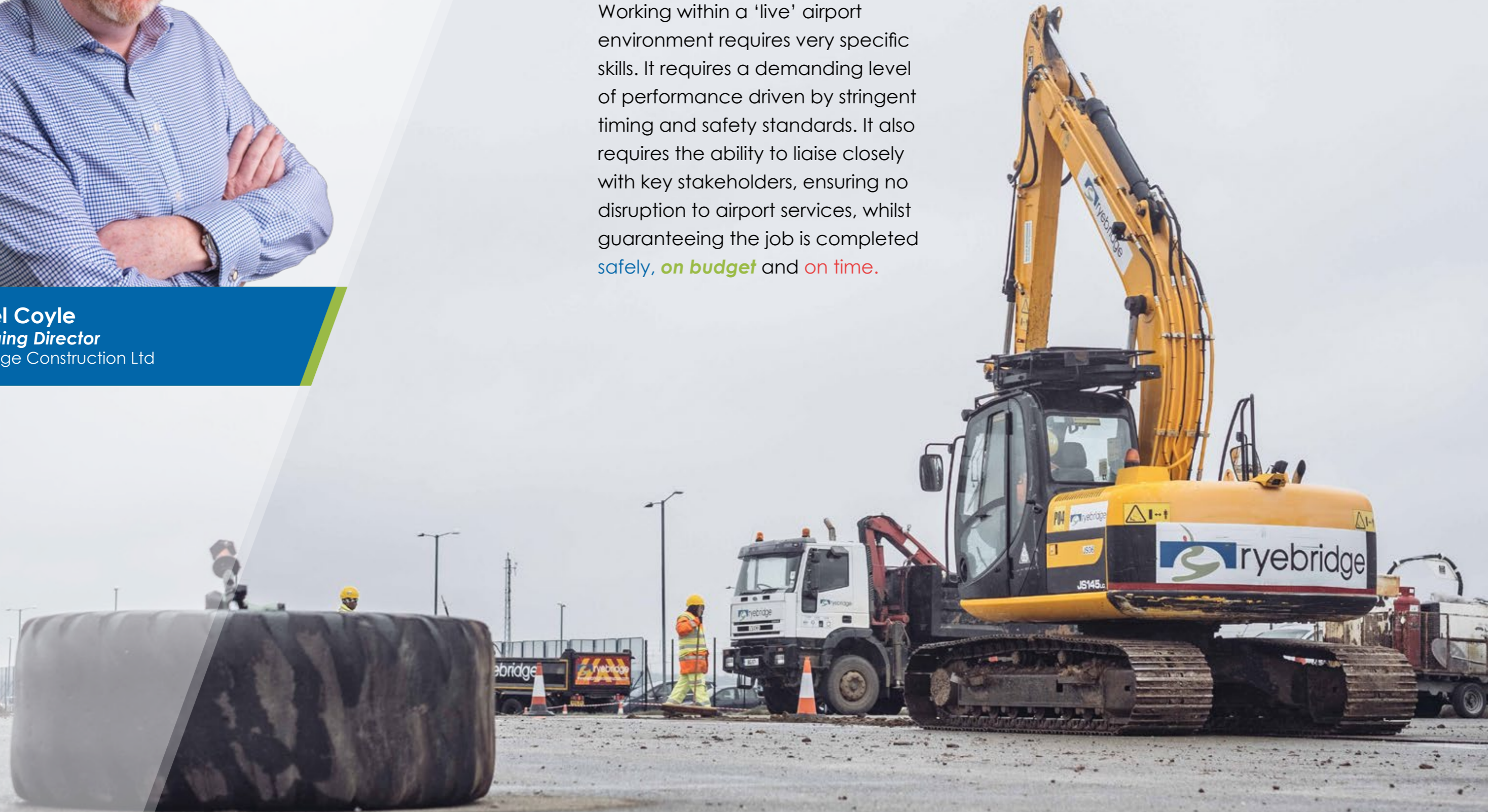
 ryebridge  
airports



**Daniel Coyle**  
**Managing Director**  
Ryebridge Construction Ltd

## At Ryebridge we have the proven skills required to consistently achieve the standards of airport environments.

Working within a 'live' airport environment requires very specific skills. It requires a demanding level of performance driven by stringent timing and safety standards. It also requires the ability to liaise closely with key stakeholders, ensuring no disruption to airport services, whilst guaranteeing the job is completed **safely, on budget** and **on time**.





At Ryebridge we have a strong safety ethos within the company and our Airport clients – which include London Luton Airport, Redhill Aerodrome and Gatwick Airport – benefit from our large bank of experienced staff, ensuring flexibility, loyalty and consistent working relationships.

Working airside it is essential to maintain a safe and efficient environment for all airfield users. Our project teams are fully trained and experienced in specialised airside procedures. We regularly liaise with the Civil Aviation Authority (CAA) to ensure all projects are fully compliant with airfield operation procedures.

The priority of an airport is the safe transportation of its customers and a safe working environment for the staff that operate within it.

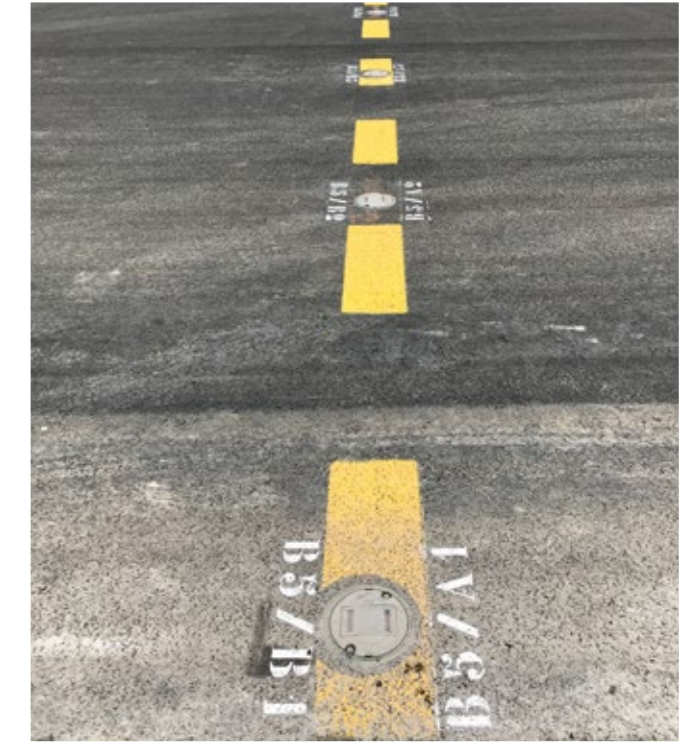
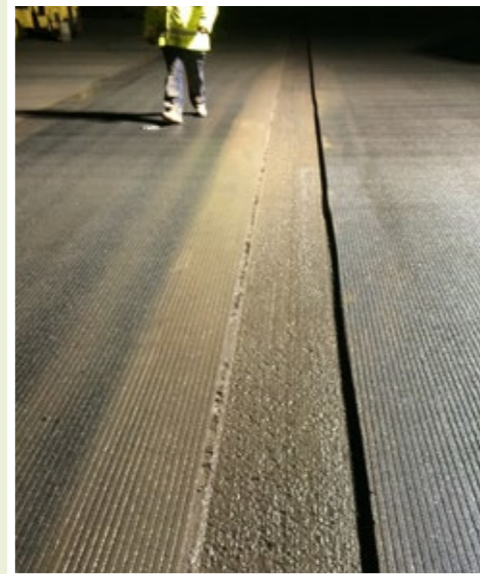
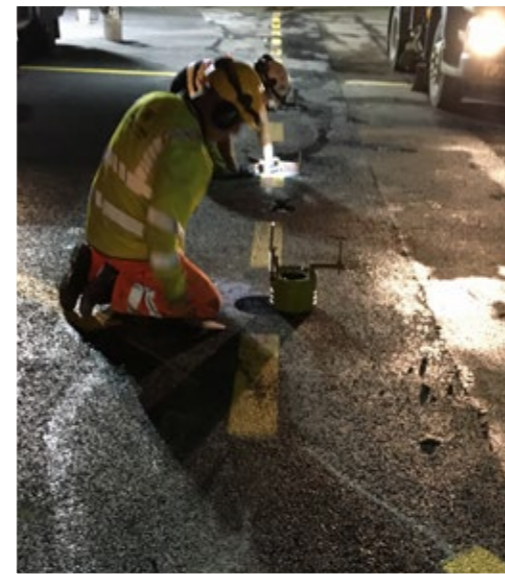
Not only do we have the correct processes and systems in place, but we also have the operational track record that shows we know what we are doing.

Our partners value Ryebridge as a solutions-focused company – we all know projects can hit challenges, so having the right partners is critical.

Safety and security standards at airports are paramount. At Ryebridge we know how to manage these requirements and we have a track record of successful airside projects to prove this.

*Click here or scan the QR Code to watch the Ryebridge team in action.*





## Airfield Ground Lighting Replacement

Ryebridge designed and installed a new Airfield Ground Lighting (AGL) system on Taxiways Alpha, Bravo, Charlie, Delta and Echo at London Luton Airport in 2013. This included constructing the F900 pits, more than 4,000m of ducting and slot-cutting, sealing work and CAA and NATS compliance.



# Airside Demolition

Ryebridge has worked in many of the most security conscious and hazardous environments in the construction sector and specialise in airside demolition. Some of our projects have been adjacent to live stands and taxiways and have been completed without affecting the airside operation.



# Airside Lining

As part of our on going framework agreement at London Luton Airport, Ryebidge has remarked and realigned numerous stands, aprons and taxiways.

# Windsocks & Navigation

Ryebidge has been contracted to NATS to install new and replace various navigation aids.

# Airside Fencing

As part of our ongoing civils framework, Ryebidge are on 24/7 call-out for boundary issues, as well as undertaking an ongoing project to replace the airside fence, section-by-section.

# Long Stay Car Park

As part of London Luton Airport's growth there was a need to extend and improve the long-term car park. This included a 1,800 space extension and an improved bus route from a spine road to a circulatory one. This also included upgrading the CCTV system to give full state-of-the-art coverage.



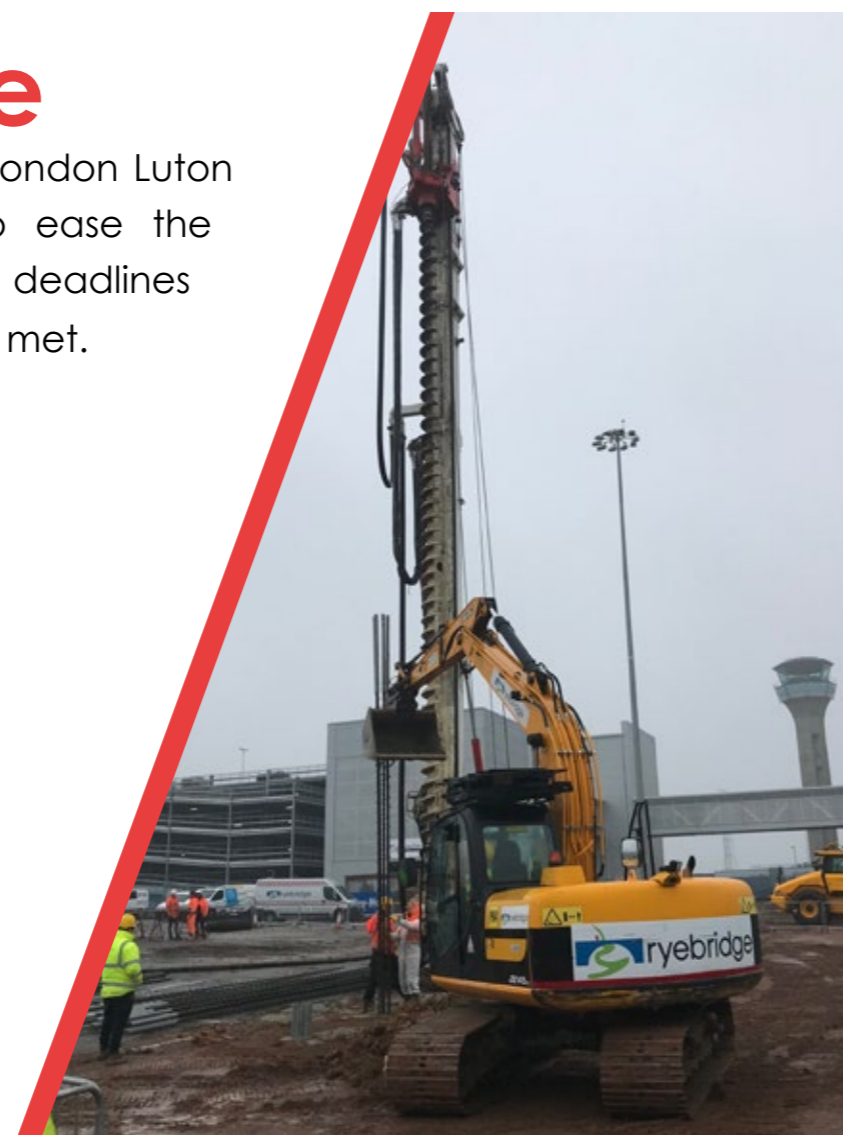
# Mid Stay Car Park

Ryebridge was employed to design and build a bus route that would give car park users the safest experience possible. Traffic modeling and safety audits were undertaken and the final layout was commended by the local authority.



# Drop Off Zone

A temporary drop off zone for London Luton Airport has been designed to ease the construction process and ensure deadlines for the airport transformation are met.



# New De-Icing Station



# Fueling Station, Washout & Sweeper Pit



# Quick Exit Snow Fleet Stand



All three of these projects were designed and relocated to assist the construction of the new Direct Air to Rail Transit (Luton DART) system, on time and budget. The DART - a £200 million project funded by London Luton Airport and Luton Borough Council - is a modern, sustainable and time-efficient system which will transport passengers to and from Parkway station and the airport.



## New 08 Approach Lights

Ryebridge was contracted by ATG Airports to design and build the civils infrastructure required to accommodate the new approach lighting. The work was completed by working on/off between aircraft movements.



## HV Ringmain

In 2015 Ryebridge received another gold award from the Royal Society for the Prevention of Accidents (RoSPA) for its work on the HV Ringmain at London Luton Airport. In partnership with the airport's HV provider, the team updated the 50+ year old High Voltage infrastructure that fed the airfield. Ryebridge installed 11km of HV cable, new substations, high voltage cable diversion/installation and thrust boring under live taxiways and the runway under a closure. All the more impressive was that there were no cable strikes throughout the 11km excavation.



In 2013 Ryebridge was contracted to Signature Flight Support to undertake the first phase of their development, which was the relocation of the airport's cargo compound and the construction of a new aircraft hanger.

# New Signature Hanger



# Hanger 62 Demolition & Stands

In 2014 Ryebridge was appointed by Signature Flight Support to undertake a key phase of their London Luton Airport expansion plan, involving the demolition of Hanger 62. This was a complex project given the proximity of nearby stands (just 20m away), the fact the hanger was built over a live substation and existence of ballistic steel and bomb proof concrete. Once the building was removed the slab was broken up and recycled back into a useable product. Drainage was then laid followed by 4,000sqm of pavement quality concrete, the substation was relocated and a blast proof acoustic fence erected.



Stage 3 of Ryebriidge's work with Signature and the crowning glory was a double hanger demolition to allow the creation of a new facility that included the construction of car parking, a new terminal, extra pavement-quality stands and apron space to facilitate the worlds busiest fixed-base operator (FBO).



**New Signature FBO & Stands**



## Surface Movement Radar Tower

For new client Indra, Ryebridge was contracted to project manage the installation of a new Surface Movement Radar Tower and the removal of the old one. This was all undertaken adjacent to London Luton Airport's Taxiway Alpha – the main artery of the airport – which remained live throughout the period.



## Taxiway Bravo

This project was undertaken for London Luton Airport as part of its £150m investment – the largest single investment in the airport's history – to increase annual capacity by 50% to 18 million passengers by 2020. Ryebridge was tasked with constructing a new taxiway and stands. The Ryebridge team designed and implemented a programme that ensured the taxiway was a phased development, and that any impact on the day-to-day airport operation was minimal. The constraints of the airport meant work had to take place during three-hour working windows, instead of the eight-hour periods originally planned for. This meant that the runway was closed for only 20 shifts, instead of the 40 that was originally planned for.



# Redhill Aerodrome

Ryebridge realigned the aerodrome's existing runway, which forms part of the perimeter taxiway, to remove the curve within it. The close proximity of an area of environmental significance provided unique challenges, with additional measures put in place to prevent water contamination.





# Taxiway Repairs

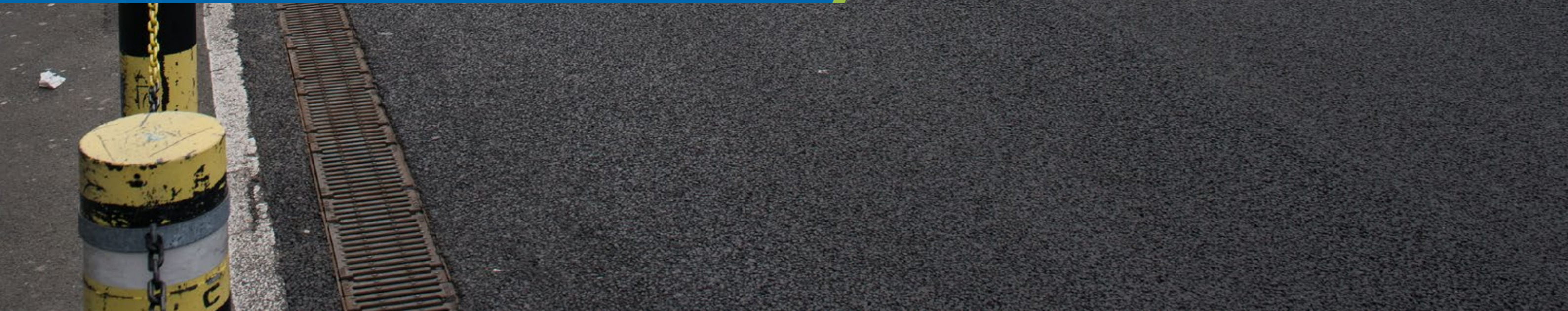
As part of our ongoing framework agreement at London Luton Airport, Ryebidge has undertaken the last 10 annual night maintenance closures - never once missing the first wave and, as is often the case, undertaking more work than was scheduled.  
[Click here or scan the QR Code to watch the Ryebidge team during nightworks.](#)





# Airside Road Stands 1 to 9

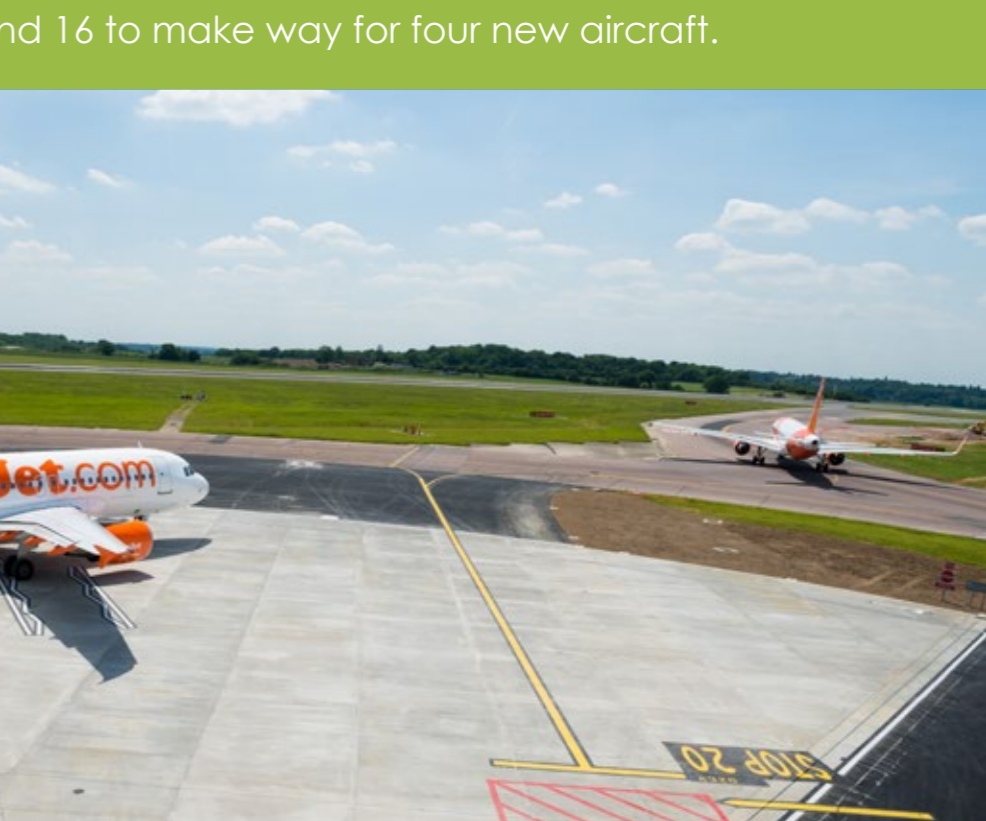
Ryebridge has maintained and rebuilt numerous roads both landside and airside. The nature of these works is demanding, as possession is often piecemeal and working windows very tight.





## South Stands

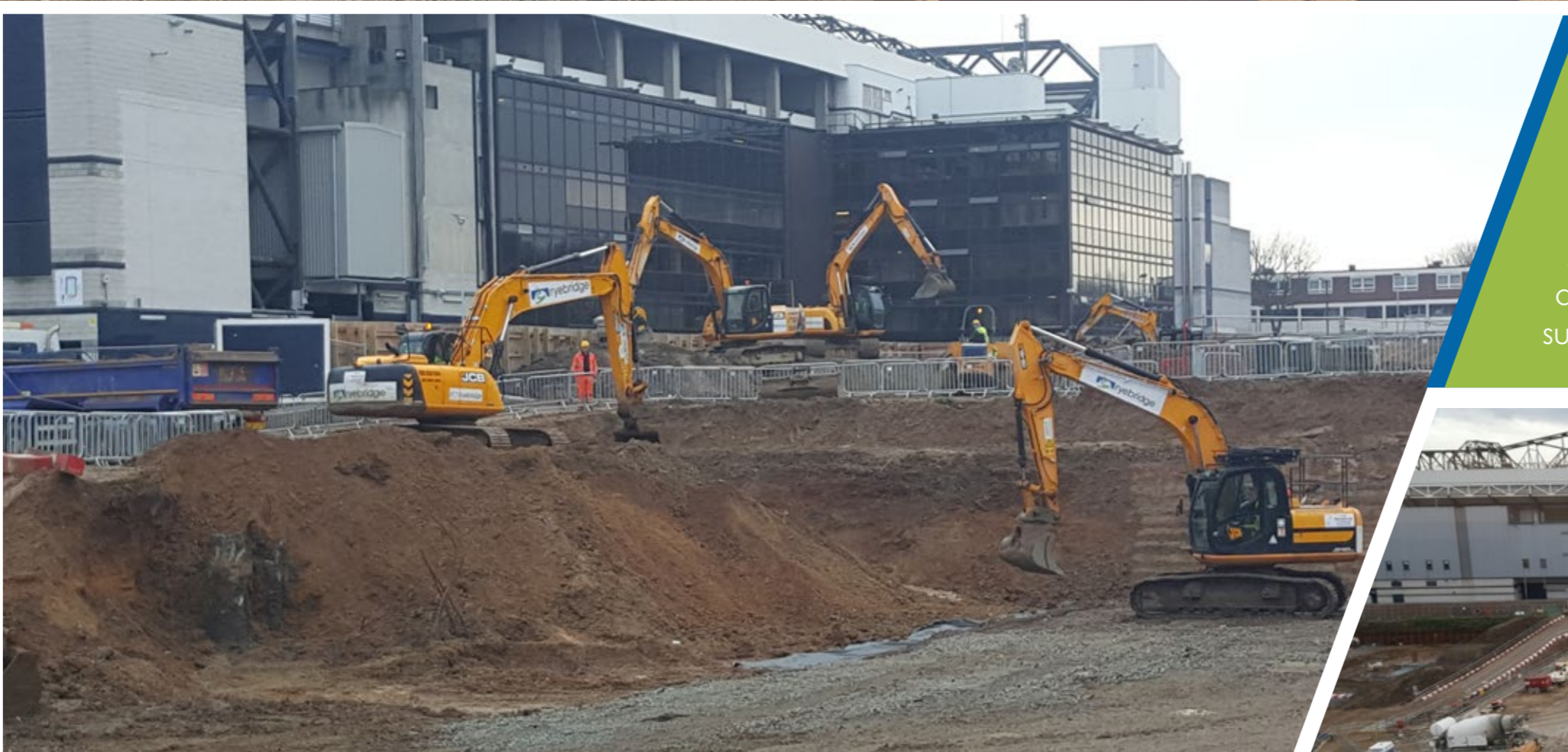
As part of the airport's expansion, Ryebridge designed and built the new south stand and stand 16 to make way for four new aircraft.





# Tottenham Hotspur Football Ground





In June 2014 Ryebridge was appointed Principle Contractor to Tottenham Hotspur Football Club (THFC), leading on a two-year project to prepare the site for its new multi-million-pound stadium. Our roles included safe site management, project management, sheet piling, bulk earth movement, ballast washing, demolition, Continuous Flight Auger (CFA) piling and substructure civil engineering.



# Giving Back & Our Team

Ryebridge is a proud and committed member of the Luton community and it is our policy to recruit locally where possible to give back and support the wider community at every opportunity. We organise regular fundraising events and sponsor many local causes including football clubs, a local hospice, potential Olympians and Level Trust – a community group which believes poverty should not stop children from loving to learn.

Ryebridge is accredited to OHSAS 18001:2007 Occupational Health and Safety Management System.



# Health, Safety, Quality & the Environment

By making health and safety a priority we continue to play our part in improving workplaces for our employees, clients, partners and the public.

We concentrate on basic issues which, together with a strong focus on leadership, result in regular reductions in both our Accident Frequency Rates (AFR) and Accident Incident Rates (AIR).

We provide information and training to enable our employees to develop and maintain essential skills and to also encourage the growth of a positive health and safety culture.

We are committed to ensuring all our site managers and supervisors hold either the Construction Skills Site Managers or Site Supervisors Safety Training Scheme (SMSTS or SSSTS) certificate or a recognised equivalent qualification, and we are working towards this target.

Ryebridge Ltd has gained CHAS accreditation which is a nationally recognised accreditation scheme. This helps demonstrate to clients a level of compliance with health and safety law in terms of competence as well as enabling compliance with the health and safety elements of the construction industry.

Ryebridge Ltd is also a member of the British Safety Council which will help in meeting legislation and raising health, safety and environmental standards.

In 2017 Ryebridge was awarded its fifth Royal Society for the Prevention of Accidents (RoSPA) gold award for its work at London Luton Airport.



CONTRACTORS HEALTH & SAFETY ASSESSMENT SCHEME

**Accredited Contractor**

[www.chas.co.uk](http://www.chas.co.uk)



**FORS**  
FLEET OPERATOR  
RECOGNITION SCHEME

**ID:008051**





## Get in touch

If there is anything that you would like to discuss with us, please do not hesitate to get in touch.

01582 451525

enquiries@ryebriidgeconstruction.com

www.ryebriidgeconstruction.com

@ryebriidge

Unit 4, Barratt Industrial Park,  
Airport Way, Luton  
LU2 9NH

